

**AIR CONTROL VALVE WITH VARIABLE DESCENT SPEED TWO-WAY**

**3.3.2.021.**

**THREE-WAY**

**3.3.2.022.**



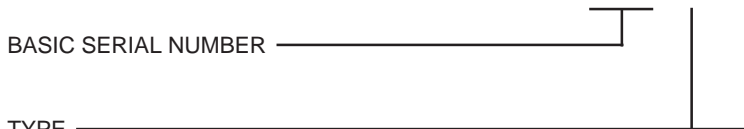
- ✓ Combined with the **3.3.1.043** or **3.3.1.045**, open-center tipping valve these airvalves control the **raising, holding and lowering** of the dump body and allow the **immediate stop** of body movement **in emergencies**, as per the safety requirements of the **Machinery Directive** for the **CE** marking of the hoist system.
- ✓ The three-way valve incorporates the **PTO control lever** and the **relevant warning light**.

**SPECIFICATIONS**

Air pressure: 12 bar max.

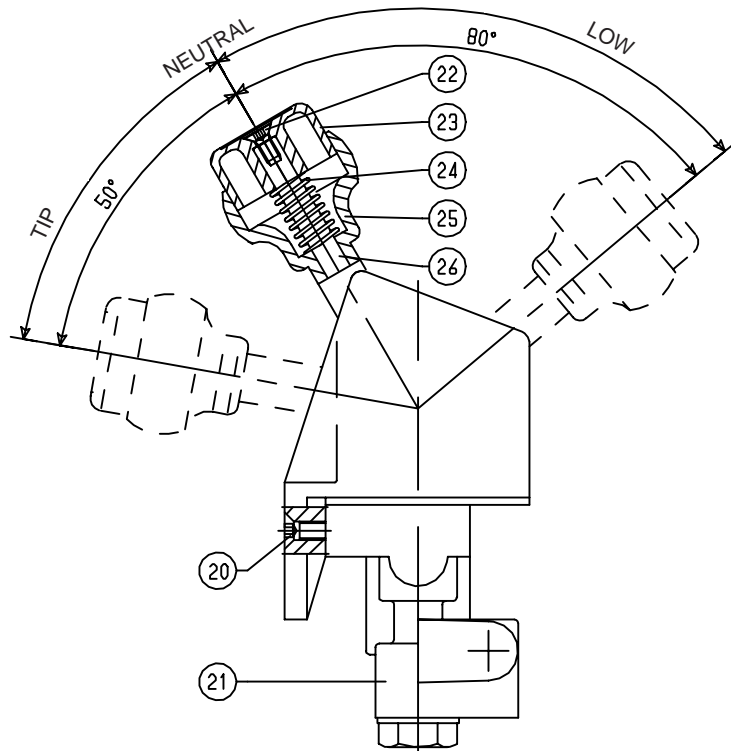
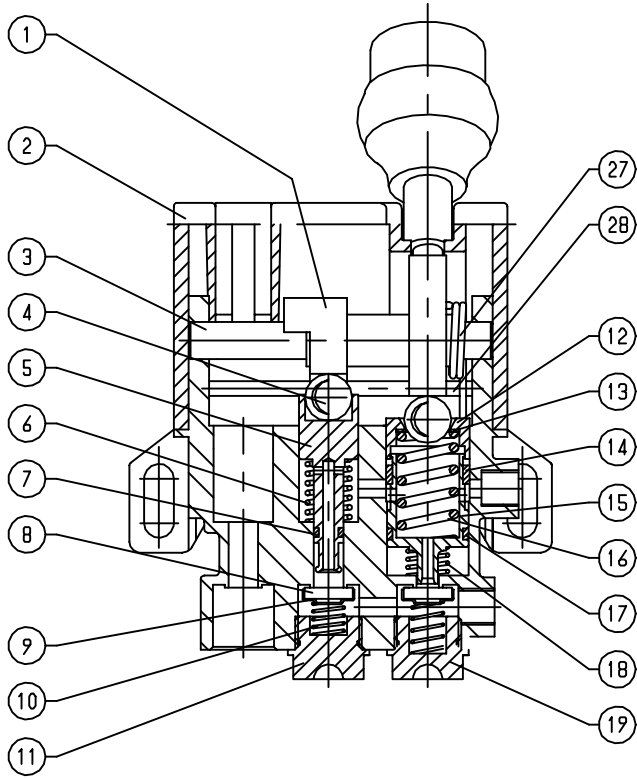
WEIGHT: two-way - kg. 0,7  
three-way - kg. 0,8

**3.3.2.XXX.XX.00**



- 021.13** = TWO-WAY RAISING AND LOWERING
- 021.18** = TWO-WAY **CE** RAISING AND LOWERING WITH SPRING RETURN TO NEUTRAL
- 021.30** = TWO-WAY RAISING AND LOWERING WITH LOCK IN "FAST LOWERING" POSITION
- 022.16** = THREE-WAY RAISING, LOWERING AND PTO CONTROL
- 022.18** = THREE-WAY RAISING, LOWERING AND PTO CONTROL, WITH AUTOMATIC PTO DISENGAGEMENT
- 022.21** = THREE-WAY **CE** RAISING, LOWERING AND PTO CONTROL, WITH SPRING RETURN TO NEUTRAL
- 022.22** = THREE-WAY **CE** RAISING, LOWERING AND PTO CONTROL, WITH SPRING RETURN TO NEUTRAL AND AUTOMATIC PTO DISENGAGEMENT
- 022.30** = THREE-WAY RAISING, LOWERING AND PTO CONTROL, WITH LOCK IN "FAST LOWERING" POSITION
- 022.31** = THREE-WAY RAISING, LOWERING AND PTO CONTROL, WITH AUTOMATIC PTO DISENGAGEMENT AND LOCK IN "FAST LOWERING" POSITION

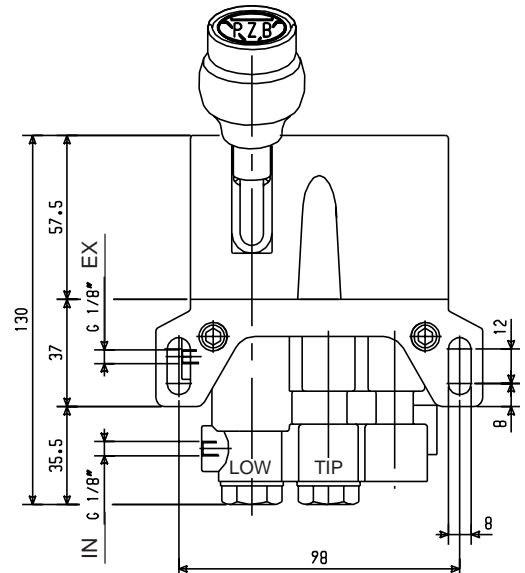
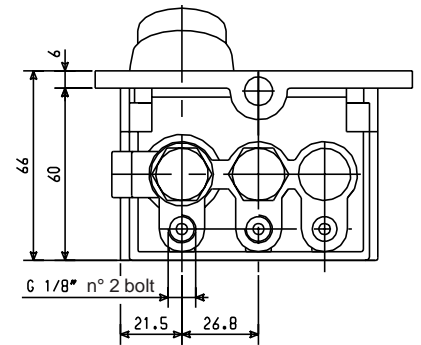
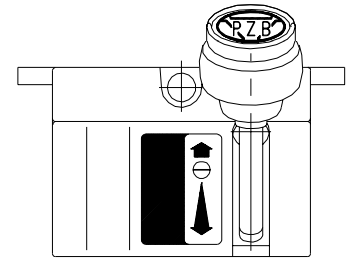
**CODE 3.3.2.021.XX.00 2-WAY**



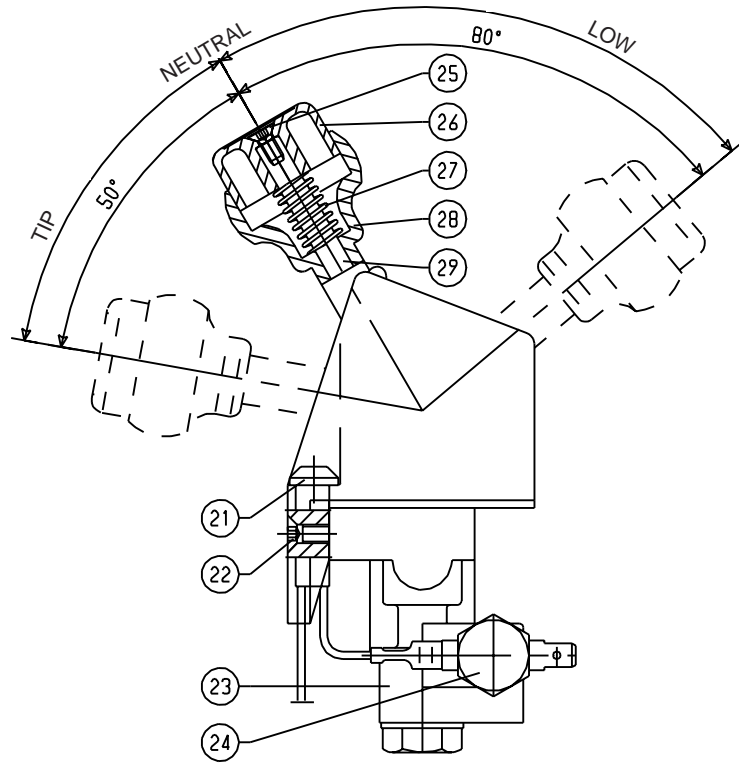
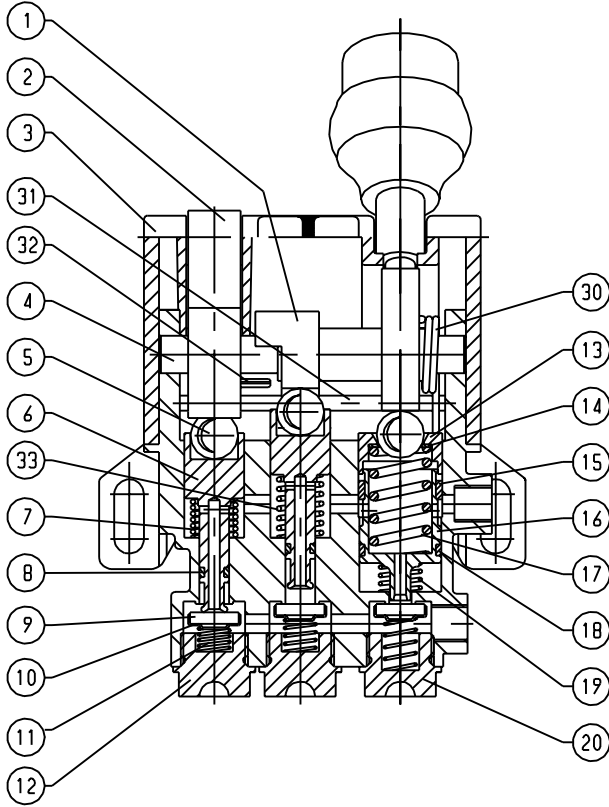
3.3.2.021.13.00	3.3.2.021.18.00	3.3.2.021.30.00
-----------------	-----------------	-----------------

REF.	CODE	DESCRIPTION	QT.		
1	1.19.03.001.00	Camshaft	1	-	-
	1.19.03.004.00	Camshaft	-	-	1
	1.19.03.009.00	Camshaft	-	1	-
2	1.24.01.079.00	Cover	1	1	1
3	1.14.02.017.00	Pivot rod	1	1	1
4	0.11.01.009.00	Ball 1/2"	2	2	2
5	1.21.02.018.00	Piston	1	1	1
6	1.28.01.011.00	Coil spring CAC1/7	1	1	-
	1.28.01.096.00	Coil spring	-	-	1
7	0.08.02.023.00	O-Ring OR 2018	1	1	1
8	1.99.00.008.00	Seal CAC1/3-A	2	2	2
9	1.24.02.006.00	Cover CAC1/3B	2	2	2
10	1.28.01.010.00	Coil spring CAC1/4	2	2	2
11	1.30.03.002.00	Plug mod61	1	1	1
12	1.27.02.127.00	Guide ring	1	1	1
13	1.27.02.126.00	Washer 11,5x17x0,8	1	1	1
14	1.29.03.009.00	Ring PTFE	1	1	1
15	1.21.02.043.00	Piston	1	1	1
16	1.28.01.112.00	Coil spring	1	1	1
17	0.08.02.070.00	O-Ring OR 2075	1	1	1
18	1.28.01.052.00	Coil spring	1	1	1
19	1.30.03.031.00	Plug	1	1	1
20	0.01.04.008.00	Capscrew TSPEI M5x20 UNI 5933 CL RES 10.9	2	2	2
21	2.99.028.0000	Housing, two-way	1	-	1
	2.99.030.0000	Housing, two-way and spring return	-	1	-
22	0.01.04.010.00	Capscrew TSPEI M4x10 UNI 5933 CL RES 10.9	1	1	1
23	1.99.00.158.00	Knob	1	1	1
24	1.28.01.081.00	Coil spring	1	1	1
25	1.23.00.030.00	Handle	1	1	1
26	1.14.02.028.00	Lever rod	1	1	1
27	1.28.01.095.00	Coil spring	-	1	-
28	1.14.02.035.00	Rod	-	1	-

**DIMENSIONS**

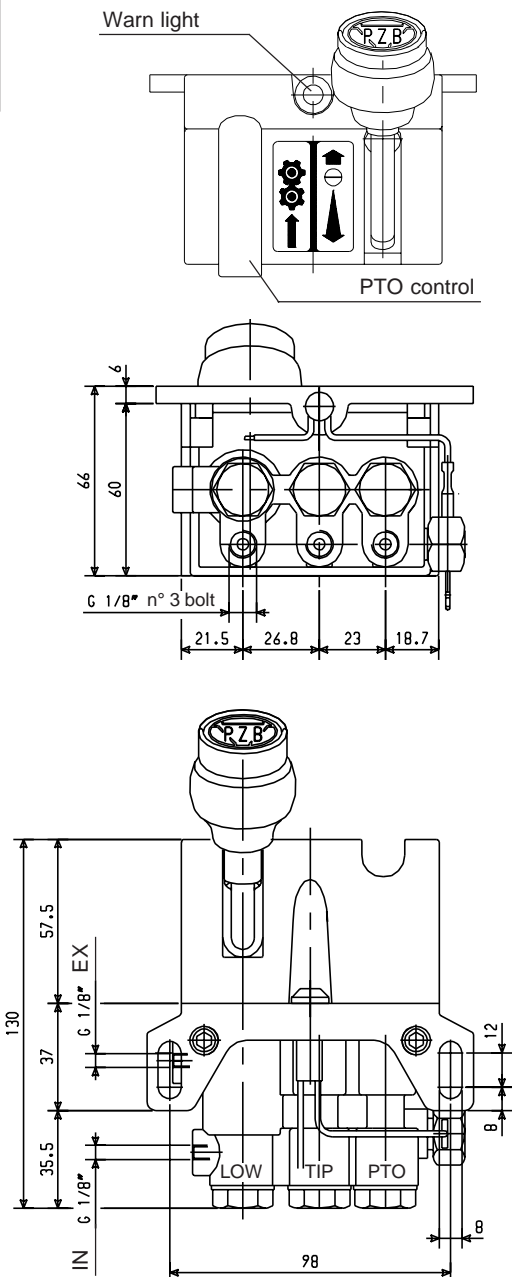


**CODE 3.3.2.022.XX.00 3-WAY**

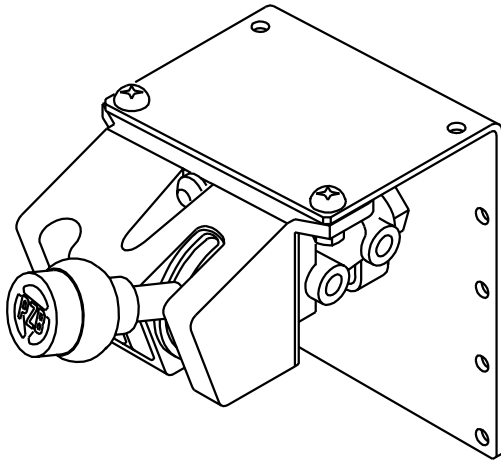


REF.	CODE	DESCRIPTION	QT.					
			3.3.2.022.16.00	3.3.2.022.18.00	3.3.2.022.21.00	3.3.2.022.22.00	3.3.2.022.30.00	3.3.2.022.31.00
1	1.19.03.001.00	Camshaft	1	1	-	-	-	-
	1.19.03.004.00	Camshaft	-	-	-	-	1	1
	1.19.03.009.00	Camshaft	-	-	1	1	-	-
2	1.23.00.020.00	Lever	1	1	1	1	1	1
3	1.24.01.078.00	Cover	1	1	1	1	1	1
4	1.14.02.017.00	Pivot rod	1	1	1	1	1	1
5	0.11.01.009.00	Ball 1/2"	3	3	3	3	3	3
6	1.21.02.018.00	Piston	2	2	2	2	2	2
7	1.28.01.011.00	Coil spring CAC1/7	2	2	2	2	1	1
8	0.08.02.023.00	O-Ring OR 2018	2	2	2	2	2	2
9	1.99.00.008.00	Seal CAC1/3-A	3	3	3	3	3	3
10	1.24.02.006.00	Cover CAC1/3B	3	3	3	3	3	3
11	1.28.01.010.00	Coil spring CAC1/4	3	3	3	3	3	3
12	1.30.03.002.00	Plug mod61	2	2	2	2	2	2
13	1.27.02.127.00	Guide ring	1	1	1	1	1	1
14	1.27.02.126.00	Washer 11,5x17x0,8	1	1	1	1	1	1
15	1.29.03.009.00	Ring PTFE	1	1	1	1	1	1
16	1.21.02.043.00	Piston	1	1	1	1	1	1
17	1.28.01.112.00	Coil spring	1	1	1	1	1	1
18	0.08.02.070.00	O-Ring OR 2075	1	1	1	1	1	1
19	1.28.01.052.00	Coil spring	1	1	1	1	1	1
20	1.30.03.031.00	Plug	1	1	1	1	1	1
21	0.99.00.078.00	Warnlight 24V 3300910124 (2 wires 1 flat connector)	1	1	1	1	1	1
22	0.01.04.008.00	Capscrew TSPEI M5x20 UNI 5933 CL RES 10.9	2	2	2	2	2	2
23	2.99.029.0000	Housing, three-way	1	1	-	-	1	1
	2.99.031.0000	Housing, three-wayand spring return	-	-	1	1	-	-
24	2.99.010.0000	Pressure switch	1	1	1	1	1	1
25	0.01.04.010.00	Capscrew TSPEI M4x10 UNI 5933 CL RES 10.9	1	1	1	1	1	1
26	1.99.00.158.00	Knob	1	1	1	1	1	1
27	1.28.01.081.00	Coil spring	1	1	1	1	1	1
28	1.23.00.030.00	Handle	1	1	1	1	1	1
29	1.14.02.028.00	Lever rod	1	1	1	1	1	1
30	1.28.01.095.00	Coil spring	-	-	1	1	-	-
31	1.14.02.035.00	Rod	-	-	1	1	-	-
32	0.05.02.005.00	Roll pin 3x18 UNI 6873	-	1	-	1	-	1
33	1.28.01.096.00	Coil spring	-	-	-	-	1	1

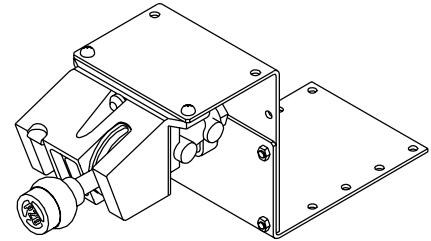
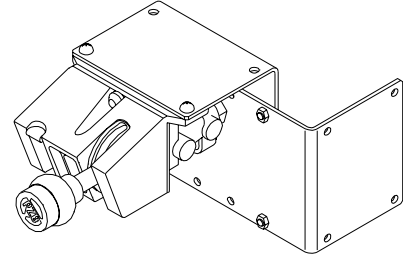
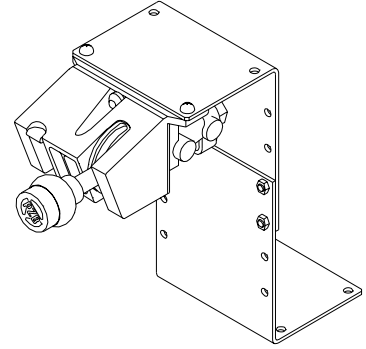
**DIMENSIONS**



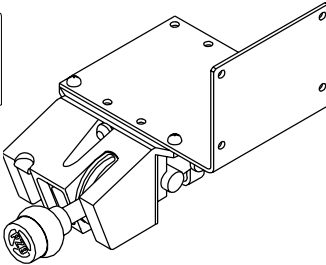
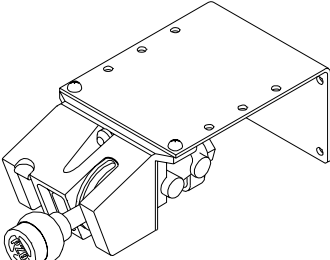
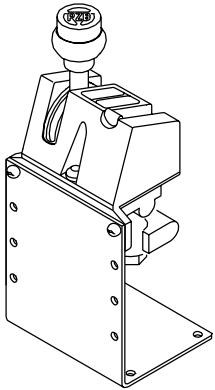
# AIR CONTROL MOUNTING BRACKET CODE 2.05.404.0000



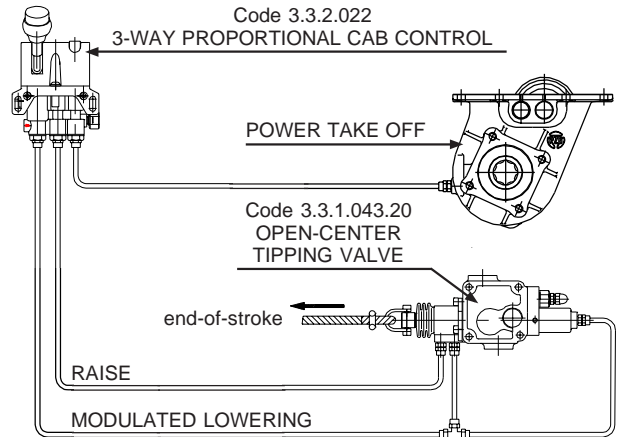
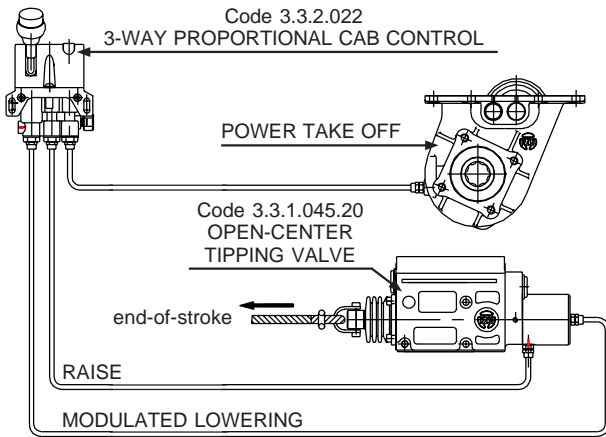
## SUGGESTED INSTALLATIONS USING TWO KITS



## SUGGESTED INSTALLATIONS USING ONE KIT



# AIR SYSTEM WITH OPEN-CENTER TIPPING VALVE AND THREE-WAY PROPORTIONAL CAB CONTROL



## WITH PNEUMATIC END-OF-STROKE

