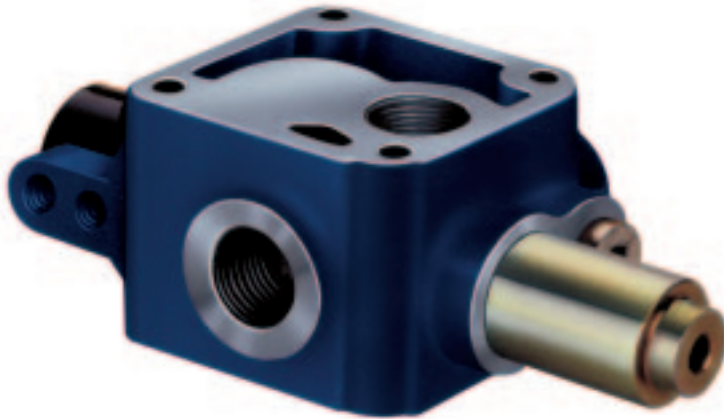
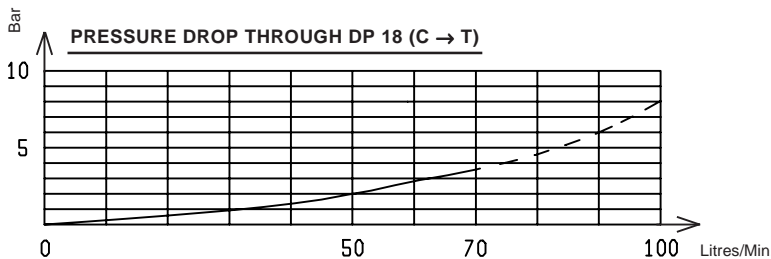


DP 18 OPEN-CENTER TIPPING VALVE

3.3.1.043.



- ✓ Air operated, open center valve for raising and lowering the tipping body.
- ✓ Used with **3.3.2.021.18** or **3.3.2.022.21** air controls it features proportional descent speed and complies with the safety requirements of the **CE Machinery Directive**.
- ✓ Designed for both chassis mounting and assembly to the tanks 2.16.020 or 2.16.021 by using the stud kit p/nr. 2.05.436.0000
- ✓ The valves **3.3.1.043.20** and **3.3.1.043.24** are fitted with a **shock absorbing spring** for the end-of-stroke rope of the tipping body.



Three way (pump, cylinder, tank) air operated control valve. Three positions:

- Hold.
- Tipping.
- Lowering.

Three modes of descent:

- One speed only.
- Two speeds (fast and slow).
- Variable descent speed with suitable air control.

Relief valve setting up to 350 Bar.

Built-in check valve.

Air pressure 4,5 - 12 Bar.

Flow up to 70 litres/min.

WEIGHT: kg 3

3.3.1.043.XX.XX

BASIC SERIAL NUMBER _____

RELIEF VALVE PRESSURE SETTING (Bar x 10)

VERSION _____

19 = AIR OPERATED

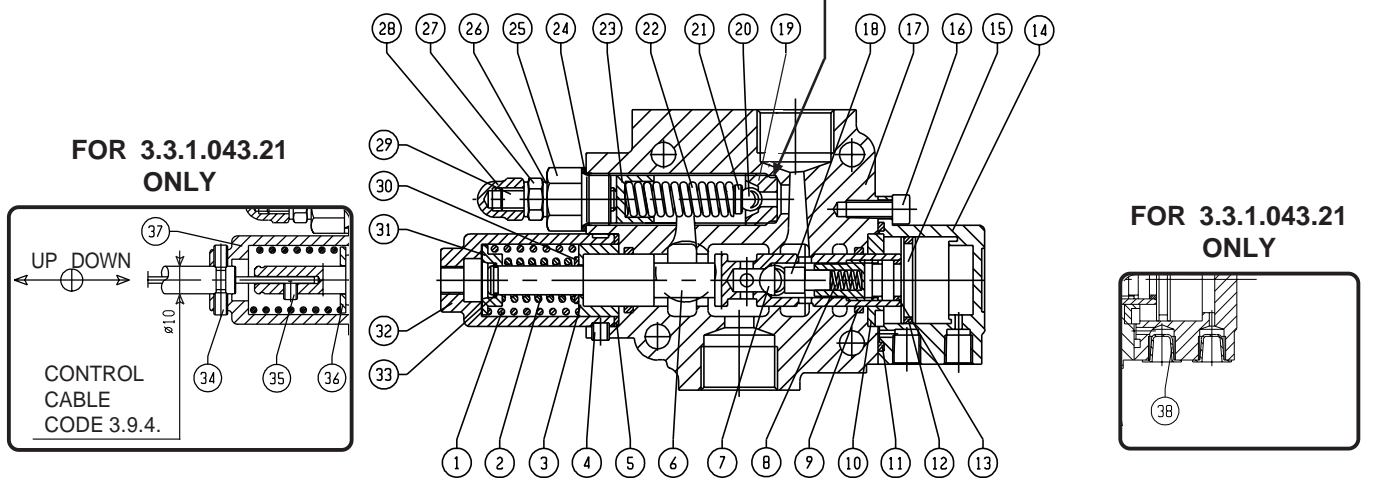
20 = AIR OPERATED, WITH END-OF-STROKE

21 = CABLE OPERATED

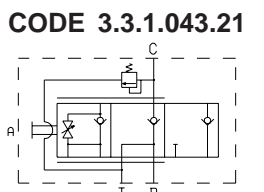
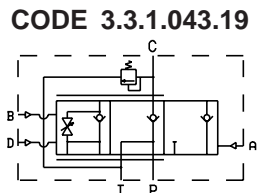
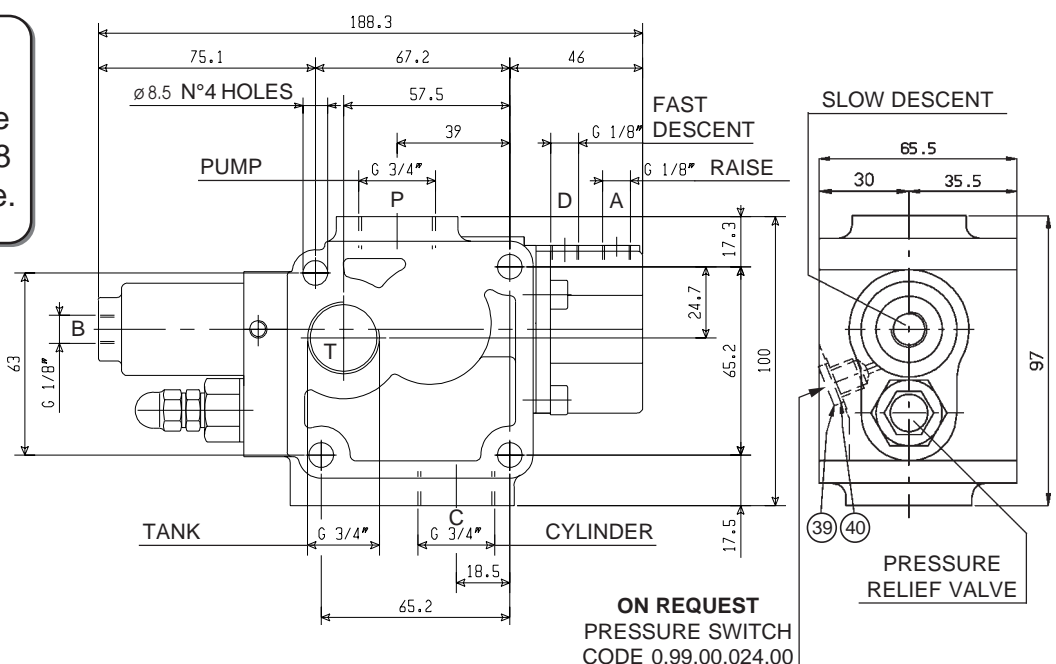
24 = CABLE OPERATED, WITH END-OF-STROKE

CODE 3.3.1.043.19.XX AIR OPERATED VALVE
CODE 3.3.1.043.21.XX CABLE OPERATED VALVE

SECURE WITH LOCTITE

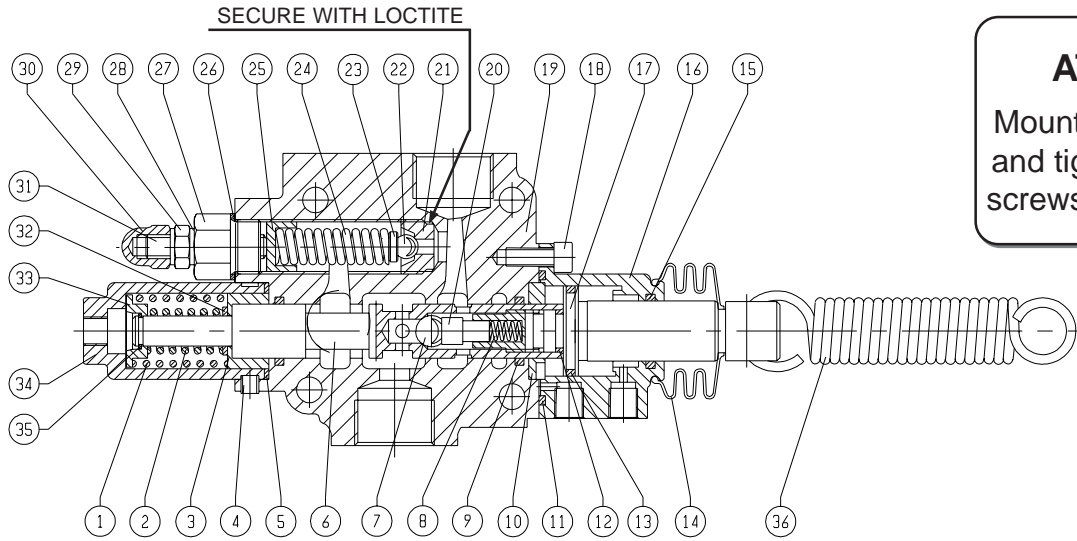


ATTENTION
 Mount on a flat surface
 and tighten the four M8
 screws to 2 kgm torque.

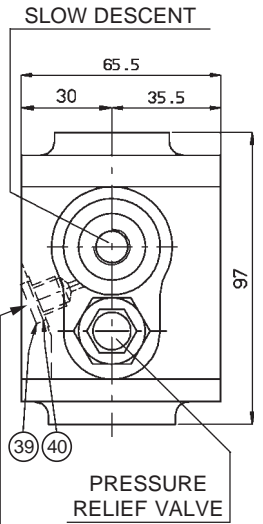
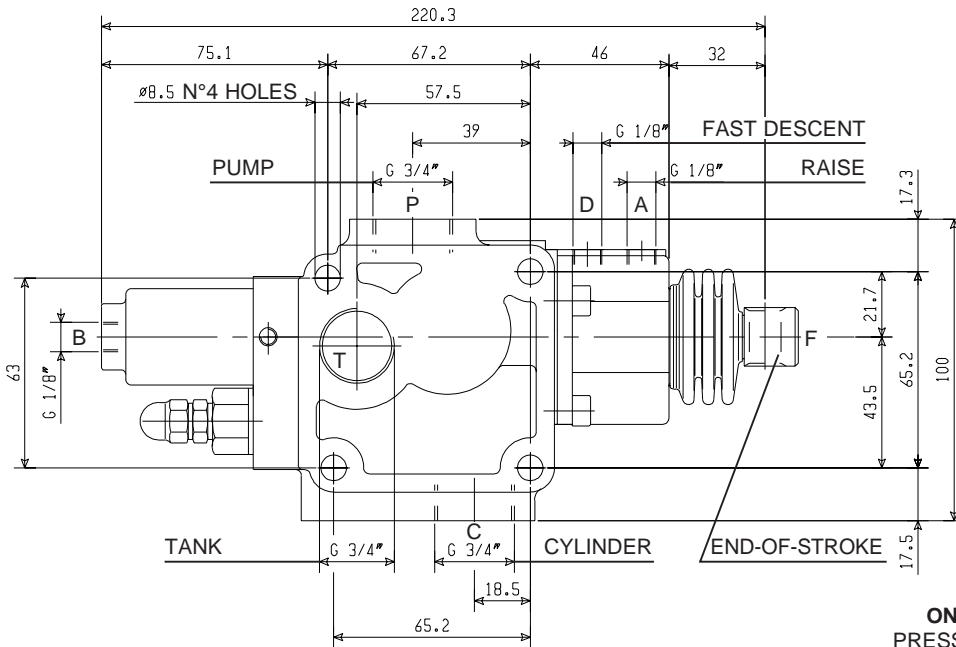
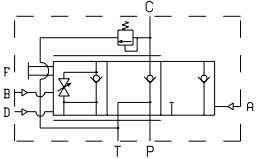


REF.	CODE	DESCRIPTION	QT.	REF.	CODE	DESCRIPTION	QT.
1	1.28.01.086.00	Coil spring slow descent	1 1	22	1.28.01.093.00	Coil spring (up to 200 bar relief pressure)	1 1
2	1.28.01.087.00	Coil spring fast descent	1 -		1.28.01.085.00	Coil spring (above 200 bar relief pressure)	1 1
3	1.26.01.097.00	Spacer	1 -	23	1.26.01.124.00	Spring cap	1 1
4	0.01.05.014.00	Capscrew STEI M6x6 UNI 5923 CL RES 45H	2 2	24	0.04.01.057.00	Washer 18x22x1	1 1
5	0.08.02.063.00	O-Ring OR 3106	1 -	25	1.30.03.043.00	Pressure adjusting screw	1 1
6	1.15.00.049.00	Valve spool	1 1	26	0.04.01.001.00	Washer 8,2x12x1,5	2 2
7	0.11.01.003.00	Ball 13/32"	1 1	27	0.03.01.010.00	Hex nut M8 UNI 5588 CL RES 8	1 1
8	1.28.01.103.00	Coil spring	1 1	28	0.03.03.001.00	Plug M8 UNI 5721 5S	1 1
9	0.08.02.100.00	O-Ring OR 123	2 2	29	0.01.05.048.00	Capscrew STEI M8x40 UNI 5923	1 1
10	1.27.02.094.00	Centering ring	1 1	30	0.04.01.010.00	Washer 10x16x1,5 (for setting above 200 bar only)	1 -
11	0.08.02.024.00	O-Ring OR 3137	1 -	31	1.20.02.007.00	Spring plate	1 1
12	0.08.02.099.00	O-Ring OR 3100	1 -	32	1.24.01.081.00	Spring cover	1 1
13	0.08.02.054.00	O-Ring OR 5-613	1 1	33	0.07.04.010.00	Circlip WR10	1 -
14	1.08.02.018.00	Cylinder	1 1	34	0.01.05.042.00	Capscrew STEI M5x8 UNI 5923 CL RES 45H	- 2
15	1.21.02.035.00	Piston	1 1	35	0.01.05.019.00	Capscrew STEI M5x6 UNI 5923 CL RES 45H	- 2
16	0.01.03.001.00	Capscrew TCEI M6x14 UNI 5931 CL RES 8.8	3 3	36	0.04.01.074.00	Washer 10,5 UNI 6592	- 1
17	1.06.01.029.00	DP 18 Valve body 3/4	1 1	37	1.24.01.082.00	Spring cover	- 1
18	1.99.00.238.00	Shutter	1 1	38	0.12.01.098.00	Plug D. 9	- 2
19	1.25.02.053.00	Valve seat	1 1	39	0.12.01.059.00	Plug	1 1
20	0.11.01.001.00	Ball 5/16"	1 1	40	0.04.01.010.00	Washer	1 1
21	1.27.02.096.00	Cover	1 1				

CODE 3.3.1.043.20.XX AIR OPERATED VALVE WITH KNOCK-OFF



ATTENTION
Mount on a flat surface and tighten the four M8 screws to 2 kgm torque.



ON REQUEST
PRESSURE SWITCH
CODE 0.99.00.024.00

REF.	CODE	DESCRIPTION	QT.
1	1.28.01.086.00	Coil spring slow descent	1
2	1.28.01.087.00	Coil spring fast descent	1
3	1.26.01.097.00	Spacer	1
4	0.01.05.014.00	Capscrew STEI M6x6 UNI 5923 CL RES 45H	2
5	0.08.02.063.00	O-Ring OR 3106	1
6	1.15.00.049.00	Valve spool	1
7	0.11.01.003.00	Ball 13/32"	1
8	1.28.01.103.00	Coil spring	1
9	0.08.02.100.00	O-Ring OR 123	2
10	1.27.02.094.00	Centering ring	1
11	0.08.02.024.00	O-Ring OR 3137	1
12	0.08.02.054.00	O-Ring OR 5-613	1
13	0.08.02.099.00	O-Ring OR 3100	1
14	1.99.00.018.00	Bellow mod29/3	1
15	0.08.02.014.00	O-Ring OR 3081	1
16	1.08.02.019.00	Pneumatic cylinder	1
17	1.21.02.037.00	Piston	1
18	0.01.03.001.00	Capscrew TCEI M6x14 UNI 5931 CL RES 8.8	3
19	1.06.01.029.00	DP 18 Valve body 3/4	1
20	1.99.00.238.00	Shutter	1
21	1.25.02.053.00	Valve seat	1

REF.	CODE	DESCRIPTION	QT.
22	0.11.01.001.00	Ball 5/16"	1
23	1.27.02.096.00	Cover	1
24	1.28.01.093.00	Coil spring (up to 200 bar relief pressure)	1
	1.28.01.085.00	Coil spring (above 200 bar relief pressure)	1
25	1.26.01.124.00	Spring cap	1
26	0.04.01.057.00	Washer 18x22x1	1
27	1.30.03.043.00	Pressure adjusting screw	1
28	0.04.01.001.00	Washer 8,2x12x1,5	2
29	0.03.01.010.00	Hex nut M8 UNI 5588 CL RES 8	1
30	0.03.03.001.00	Plug M8 UNI 5721 5S	1
31	0.01.05.048.00	Capscrew STEI M8x40 UNI 5923	1
32	0.04.01.010.00	Washer 10x16x1,5 (for setting above 200 bar only)	1
33	1.20.02.007.00	Cover	1
34	1.24.01.081.00	Spring cover	1
35	0.07.04.010.00	Circlip WR10	1
36	1.28.01.121.00	Anti-shock spring	1
39	0.12.01.059.00	Plug	1
40	0.04.01.010.00	Washer	1

